

Company profile – facts in a nutshell

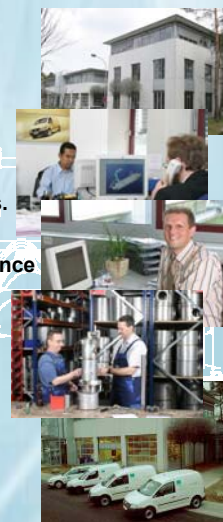
The German headquarter of HUSS, LLC is a developer, producer and seller of diesel particular filter systems for construction machines, fork-lift trucks municipal and commercial vehicles, buses and stationary power engines up to 700 hp.

Our systems are specified either for retrofit and OEM applications.

The HUSS products are successfully established on the market since 1985. The customer benefits of more than 20 years of experience.

More than 30,000 systems are already installed on a wide variety of applications.

We are certified by CARB, VERT, 3CV, TRGS554, TALuft, Technologisk Institut, DIN Iso, TÜV approval.



Functions of DPF - System

„Filtering“ or „how to catch the particles“

Filter efficiency of the filter medium

wall-flow filtering and **non wall-filtering** methods as well as different filter mediums e.g. like SiC, Cordierit, Sinter Metal make the difference

„Regenerating“ or „how to get rid of the particles“

Active Regeneration:

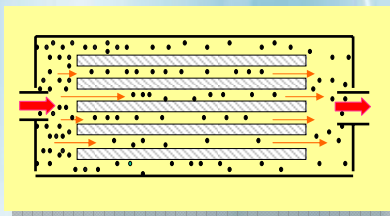
In order to burn the soot the igniting temperature of 1050°F is reached by adding thermal energy e.g. by diesel burner or electric heating

Passive Regeneration:

In order to burn the soot, the igniting temperature of 1050°F is reduced e.g. by adding additives to the fuel or using an oxidation catalyst

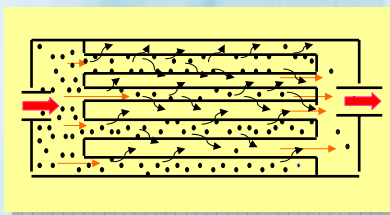


Product range – a solution for every application:
only wall-flow filters grant a high filter efficiency
Particles are no gases!



An open, or so called non-wall flow filter works like a catalytic converter.

The main advantage is that the filter can not be blocked but goes along with a filter efficiency of only of 40%-60%.



A closed, or so called wall-flow filter system has a very high filter efficiency of about 95% and more. In order not to get blocked by the soot particles these filters need to have a safe regeneration method. The MK-Filter system of HUSS are closed filter systems.

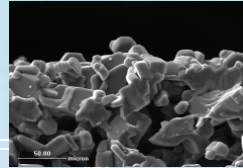


Product range – a solution for every application:
Silicon Carbide (SiC) – don't settle for something worse



Material Attributes of SiC:

- high thermal resistance
- high chemical resistance
- high mechanical durability
- high filter efficiency
- low back-pressure attitude



5

The MK-System: Diesel Burner Technology Autarkic, fast and easy



The MK-System is ideal for vehicles with low exhaust gas temperatures

This is typical for construction machines, municipal vehicles and public transportation

The filter efficiency is about 99% and the regeneration is caused simply on the vehicle; totally autarkic without the necessity of other energy sources

The HUSS-Control is supervising and controlling the process of soot loading and regeneration



6

Advantages of the MK-Systems: The details make the difference

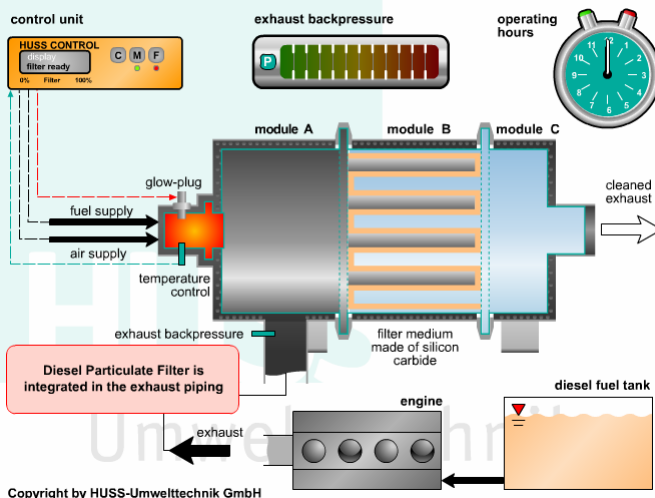


- Independant from exhaust gas temperature due to stand still regeneration
Ideal for vehicles at low or unsteady exhaust gas temperatures
- Independant from other, external energy sources
Diesel fuel for regeneration is taken out of the tank of the vehicle
- Extremely short regeneration periods between 8 and 35 minutes
Regeneration is completed in a very short time; short engine shut down times
- Filter soot load between 8 to 10 hours
No influence of the filter to the usage of the machine
- Low fuel consumption due to regeneration
Between 0.03 and 0.08 gal per regeneration
- No secondary emissions
Oxygen is transported to the filter by additional blower
- From 18kW (25 hp) to 500 kW (700 hp) engine performance
small filter for 18 kW (25 hp) to 30 kW (40 hp); available in oval design
- Horizontally and vertically mountable
Flexibility in intergration on the vehicle



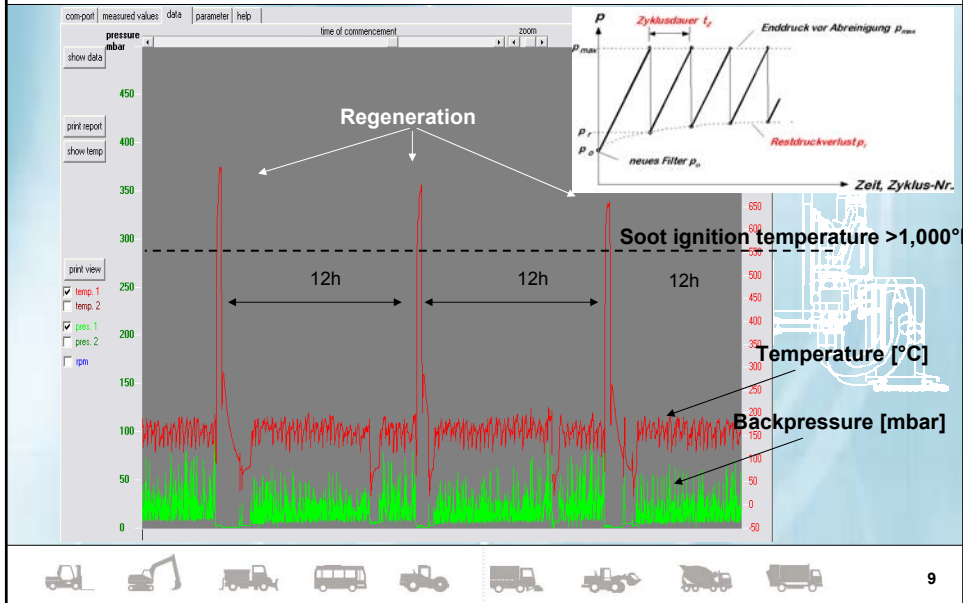
7

Function principle of the MK-System: Regeneration? Press the button!



8

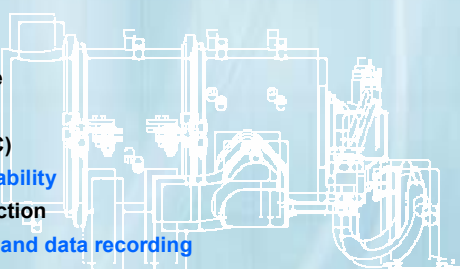
Regeneration Cycle of Diesel Particulate Filter with active Diesel Burner Technology



HUSS typical advantages



- **Modular design of the filter**
Simple to maintain and integrate on the vehicle
- **Casing made from stainless steel**
Long life time and durability
- **Additional silencer module available**
Meeting strict noise regulations
- **Filtration with hightech ceramic (SiC)**
99% soot collection and high reliability
- **HUSS-Control with Data-Logger function**
100% supervision of the process and data recording
- **More than 20 years of experience**
Know-how directly from the manufacturer



Applications



Forklifts



Applications



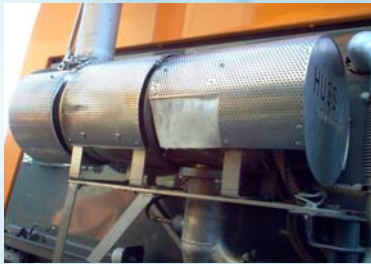
Sweeper



Applications



Sweeper



Applications



Construction applications



Applications



Lifting platform
Truck
Loader



Applications



BUS
Sweeper (double system)



Contact Information



USA

HUSS, LLC
1717 E Vista Chino Suite A7 104
Palm Springs, CA. 92262

Phone: +1.310.359.2360
Fax: +1.614.352.2360

e-mail: lutz.lehmann@huss-filters.com
www.huss-filters.com

GERMANY

HUSS Umwelttechnik GmbH
Nordostpark 74
DE-90411 Nürnberg

Tel.: +49-911-65657-0
Fax: +49-911-65657-22

e-mail: info@huss-filters.com
www.huss-filters.com

