

# AMERICAN ASSOCIATION OF PORT AUTHORITIES

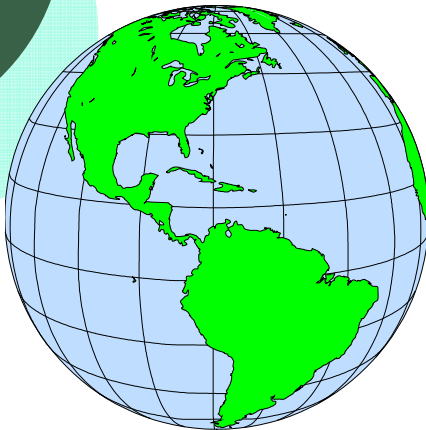
## Faster Freight – Cleaner Air 2007

### Positive Steps Forward

Kurt Nagle, President & CEO  
American Association of Port Authorities  
February 26, 2007



## What is AAPA?



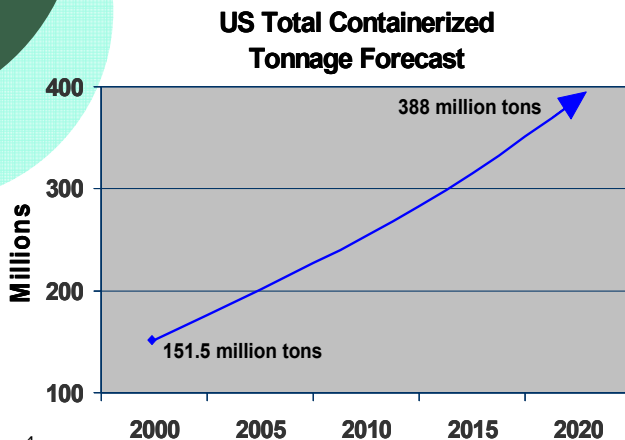
- An alliance of 160 of the leading public ports in the Western Hemisphere, 85 in the U.S.
- Member ports vary in size, cargo and vessel types handled, operating structure, geographic service area
- AAPA advocates for port issues and works to inform public, media, policymakers about value of ports

## The Role of Ports



- To promote and facilitate commerce for city, state, region and country
- To serve as economic engines that provide good jobs
- To act as good stewards of local coastal resources

## Key Port Challenge: Dramatic Trade Growth Coming



- Ports investing billions/\$/year on infrastructure projects just to keep up
- Container cargo volumes +53% in last 7 years
- Security, environment, economic development also priorities

## Key Port Challenge: Funding Improvements

- As public entities, mission of ports is to serve the public
- Most ports must rely on mix of funding sources for capital expenditures
- Biggest funding challenges are for security, navigation (dredging), terminal infrastructure, environmental, and road/rail access improvements



## Key Port Challenge: Improving the Coastal Environment

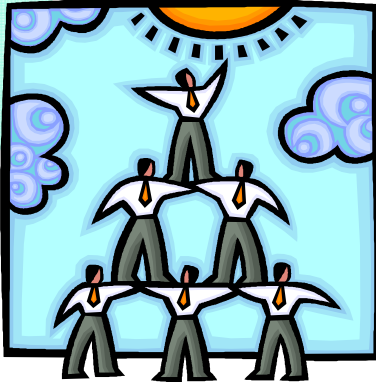


Port of Long Beach executives promote program to reduce marine terminal tractor exhausts

AAPA members are taking a leadership role to improve the coastal environment by:

- Developing environmental enhancement projects
- Voluntarily reducing diesel emissions at ports
- Advocating ratification of MARPOL Annex VI to limit vessel emissions
- Urging national & international ballast water management programs
- Adopting Environmental Management Systems

## Meeting Challenges Through Cooperation



- Collaborating with other ports through SHARE initiative
- Partnering with other freight stakeholders
- Working with federal agencies and Congress

## AAPA's "SHARE" Initiative

Promotes sharing of knowledge and industry best practices through programs such as:

- Seminars, workshops, conferences and conventions
- Awards competitions
- Port Professional Technical Assistance Program
- Port Environmental/Security Management System Assistance Projects
- Port Sustainability Task Force



Share  
AAPA

## Port Environmental/Security Management Systems

AAPA & EPA Sector  
Strategies working with  
GETF

Second 18-month round  
began January 2006

EMS/SMS Project  
Elements:

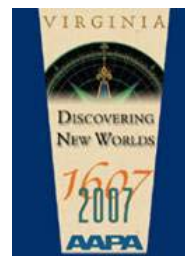
- Intensive training
- Site visits
- Conference calls
- Electronic access to documents



Four steps to an effective  
EMS/SMS

## Port Sustainability Task Force

- AAPA formed Port Sustainability Task Force in November 2006
- Objective is to develop a sustainability policy platform
- Approaches likely to revolve around financial, environmental, security, social responsibility & economic issues
- Near-term goal is to draft mission statement & guiding principles in time for 2007 AAPA Annual Convention in Norfolk



## Partnership Initiatives

- AAPA/Corps Quality Partnership Initiative
- Freight Stakeholders Coalition



11

## AAPA/U.S. Corps of Engineers Quality Partnership Initiative



Collaboratively addressing navigation,  
environment and trade growth challenges

12



# Freight Stakeholders Coalition



## Sharing, Partnering, Learning Are Keys To Meeting Port Challenges



- Through cooperation and initiative programs, AAPA helps ports meet financial, social and environmental challenges of trade growth, security and freight mobility
- AAPA is developing new approaches to help member ports provide long-term sustainable benefits for the communities they serve