



SOUTHERN CALIFORNIA

**Resolving  
Regional  
Challenges**

ASSOCIATION of  
GOVERNMENTS

[www.scag.ca.gov](http://www.scag.ca.gov)

**SCAG IS** the Largest Regional Planning Agency in the United States


**Federal Designation**

**M**etropolitan  
**P**lanning  
**O**rganization

**State Designation**

**R**egional  
**T**ransportation  
**P**lanning  
**A**gency

**C**ouncil  
**O**f  
**G**overnments



**Resolving Regional Challenges**

# SCAG Represents

- 6 Counties
- 187 Cities
- 38,000 square miles
- 18 million people
- 10th largest economy in the world



*Resolving Regional Challenges*

# SCAG Deals With

## Regional Issues



- Transportation
- Goods Movement
- Housing
- Air Quality
- Waste Management
- Growth Forecasting
- and More...



*Resolving Regional Challenges*

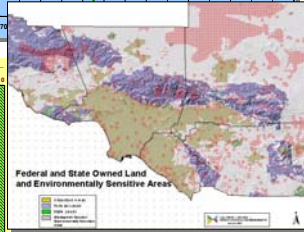
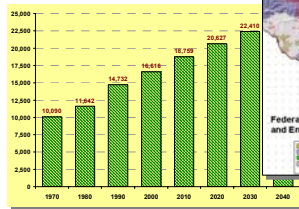
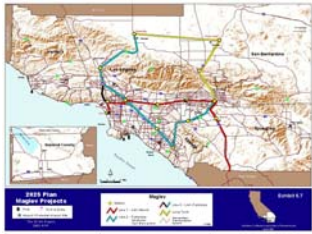
# SCAG Also Acts As

An  
Information  
Clearing  
House

Regional  
Transportation  
Modeling  
System

Forecasting &  
Policy Analysis

Regional  
Statistics,  
monitoring  
and GIS



*Resolving Regional Challenges*

# For More Than 40 Years

SCAG has worked to develop innovative, long-term solutions to all of the issues that shape the way we live.

Committed to achieving a better quality of life for Southern Californians.



*Resolving Regional Challenges*

# SCAG's Focus Is On



**SCAG is a Voluntary  
Membership Organization**



***Resolving Regional Challenges***

# Subregions Provide Local Input



- 14 in Total
- SCAG provides funding and assistance to subregions to facilitate planning activities
- Part of SCAG's commitment to inclusive, participatory planning



***Resolving Regional Challenges***

# A Regional Council Makes All Decisions

**Regional  
Council**  
**76**  
Voting  
Members

- Elected Officials from 65 Districts
- 7 County Representatives
- 2 County Transportation Commission Representatives
- Mayor of Los Angeles
- Receive Advice From Policy Committees



***Resolving Regional Challenges***

## Policy Committees

### Administration Committee



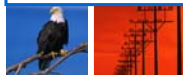
- Communications/ Membership
- Strategic Plan

### Community, Economic & Human Development



- Forecasting
- RHNA
- Benchmarks
- Growth Visioning
- Modeling

### Energy & Environment Committee



- Water Policy
- Solid Waste

### Transportation & Communications Committee



- Goods Movement
- Aviation
- Regional Transit
- Regional TDM
- MagLev
- RTP TAC
- Highway/Trans. Finance
- 4 Corners
- Southwest Compact
- CETAP
- RSTIS

**Committees Composed of Local Elected Officials Including Subregional Representatives.**

**They are Supported by 20 Task Forces and Subcommittees.**



***Resolving Regional Challenges***

## Activities Are Funded By



**Federal & State Transportation  
and Other Planning Grants  
(over 90%)**



### **Membership Dues**

Regional Council Activities  
Annual General Assembly  
Legislation Coordination



***Resolving Regional Challenges***

## SCAG Is Responsible For



### **The Regional Transportation Plan**

- **Long-Range Plan of Policies and Projects that:**
  - addresses mobility and congestion
  - meets air quality requirements
  - identifies adequate funding for transportation projects



***Resolving Regional Challenges***

# SCAG Is Responsible For

The Land Use and  
Transportation  
Programs &  
Strategies of the  
South Coast  
AQMD Plan



Determining  
that Projects,  
Plans and  
Programs  
Conform to the  
Air Quality Plan



*Resolving Regional Challenges*

# Goods Movement Initiatives

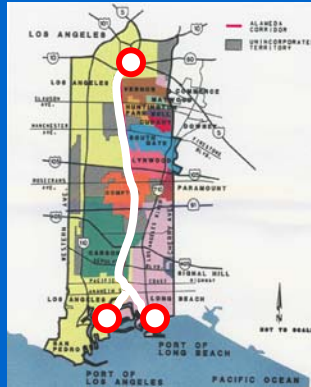
Formed the first  
Ports Advisory  
Committee over  
25 years ago



*Resolving Regional Challenges*

# Key Accomplishment

## Originated Alameda Corridor Concept

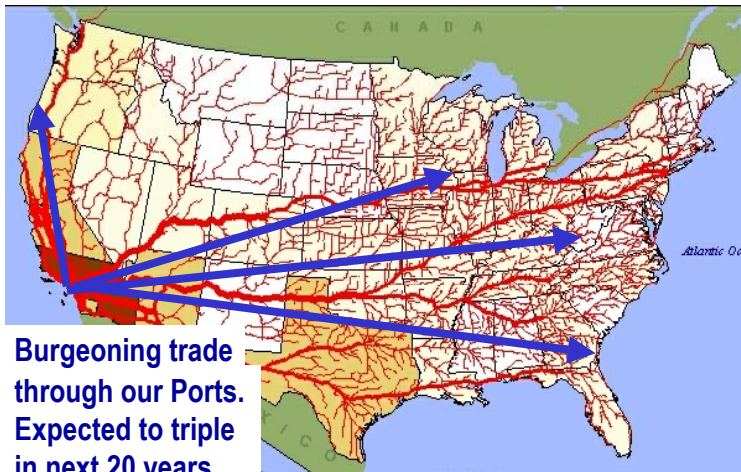


High-speed, high capacity goods movement corridor completed in 2002



*Resolving Regional Challenges*

# Explosive Volume Growth



*Resolving Regional Challenges*

# Freight Rail Studies

## Los Angeles-Inland Empire Railroad Mainline Advance Planning Study (2002)

- Forecasted future rail traffic to the year 2025 and identified rail infrastructure needed to accommodate expected growth

## Inland Empire Mainline Study (2005)

- Identified rail infrastructure needs from Colton east to Indio and north to Barstow



*Resolving Regional Challenges*

# Truck Studies

## Sr-60 Truck Lane Feasibility Study (2001)

- Concluded that dedicated truck lane construction between the I-710 and the I-15 was in fact feasible

## Truck Count Study (2002)

- Conducted 24-hour, observed counts at over 150 highway locations throughout the region



*Resolving Regional Challenges*

# Logistics Studies

## Empty Container Study (2002)

- Concluded that the number of empty containers that could be reloaded for export could be increased from 2% to between 5-10%

## Logistics and Distribution: An Answer to Regional Upward Social Mobility (2004)

- Determined that the industry accounts for about 1 in 7 (550,000) jobs in the region. At higher pay level, they can replace lost manufacturing jobs



*Resolving Regional Challenges*

# Economic Studies

## Port and Modal Elasticity Study (2005)

- Questioned impact of user fees on cargo volumes at the LA/Long Beach Ports
- Concluded that container charges **RESULTING IN CONGESTION RELIEF** would reduce volume by only 4.3%



*Resolving Regional Challenges*

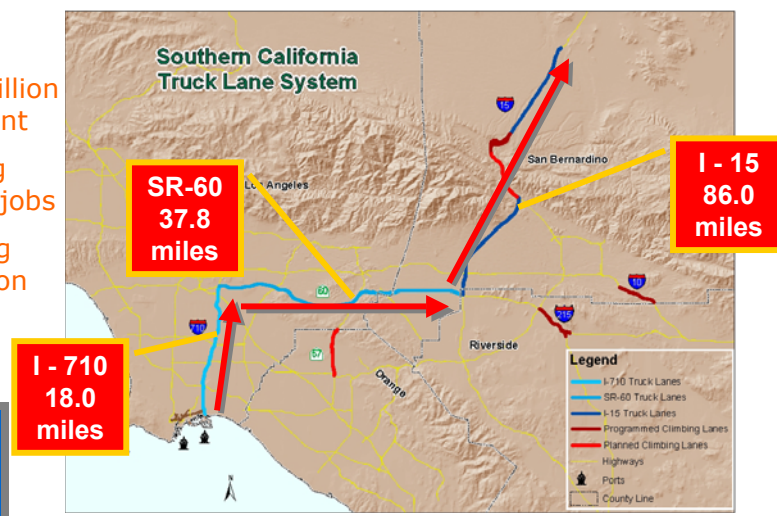
# Goods Movement Plans



*Resolving Regional Challenges*

## Dedicated Regional Truckway System

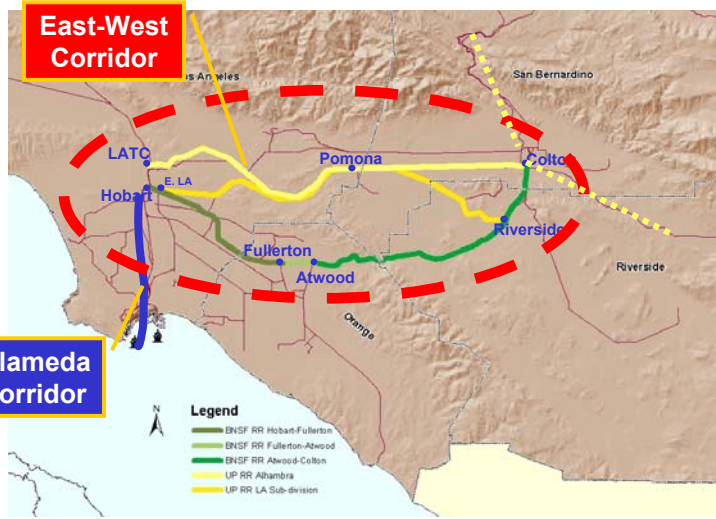
- \$16.5 billion investment
- Creating 227,000 jobs
- Injecting \$7.8 billion into the economy



*Resolving Regional Challenges*

# Additional Tracks/Grade Separations

- \$3.4 billion investment
- Creating 49,000 jobs
- Injecting \$1.7 billion into the economy



**Resolving Regional Challenges**

# SCAG Goods Movement Knowledge Base

scag.ca.gov

**Southern California Association of Governments**

**THE STATE OF THE REGION 2006**

**Resolving Regional Challenges**

**GOODS MOVEMENT ACTION PLAN**

**SEARCH SITE**

**Quick Links**

- Feedback
- Get Involved
- Download your Application for 2% Strategy State of Services and Demonstration Projects

**What's New**

- News Release: Regional Economic Forecast Conference Cites Infrastructure, Housing as Key to Long-Term Economic Viability
- The Race Is On... Download the Ninth Annual Regional Economic Conference Report
- Regional Strategy for Aviation

**Upcoming Events**


- January 18 - February 1, 2006 Long Beach Convention Center **Faster Freight Cleaner Air 2006** A Summit on North American Goods Movement and Air Quality. Register now!
- Thursday, February 2, 2006 Joint Workshop of the Regional Council and Policy Committees



**Resolving Regional Challenges**

## SCAG Goods Movement Knowledge Base

Searchable  
database of  
over 200  
studies



The screenshot shows a web browser window with the title "SCAG Regional Goods Movement". The search interface includes a search bar, radio buttons for "Any terms" (selected) and "All terms", and checkboxes for search criteria: "Keyword" (checked), "Abstract", "Project Manager", "Report #", "Title", "Consultant", and "Route". Filter fields include "Caltrans District" (All), "Geography" (All), "Lead Agency" (All), and "Study Type" (All). The "Completion Date" section has radio buttons for "All or" (selected) and "Range", with date pickers for "1 / 2005" and "1 / 2006". A "Sort by" dropdown is set to "Date", and a "Submit" button is at the bottom.



*Resolving Regional Challenges*

## Current Studies

### Inland Port Feasibility Study

- Examining potential roles and functions of a regional Inland Port – costs, benefits and potential locations
- Expected completion June 2007



*Resolving Regional Challenges*

**Come Visit  
Us At Booth  
#100!**

