
I-880 Corridor

Key Improvement and Management Strategies

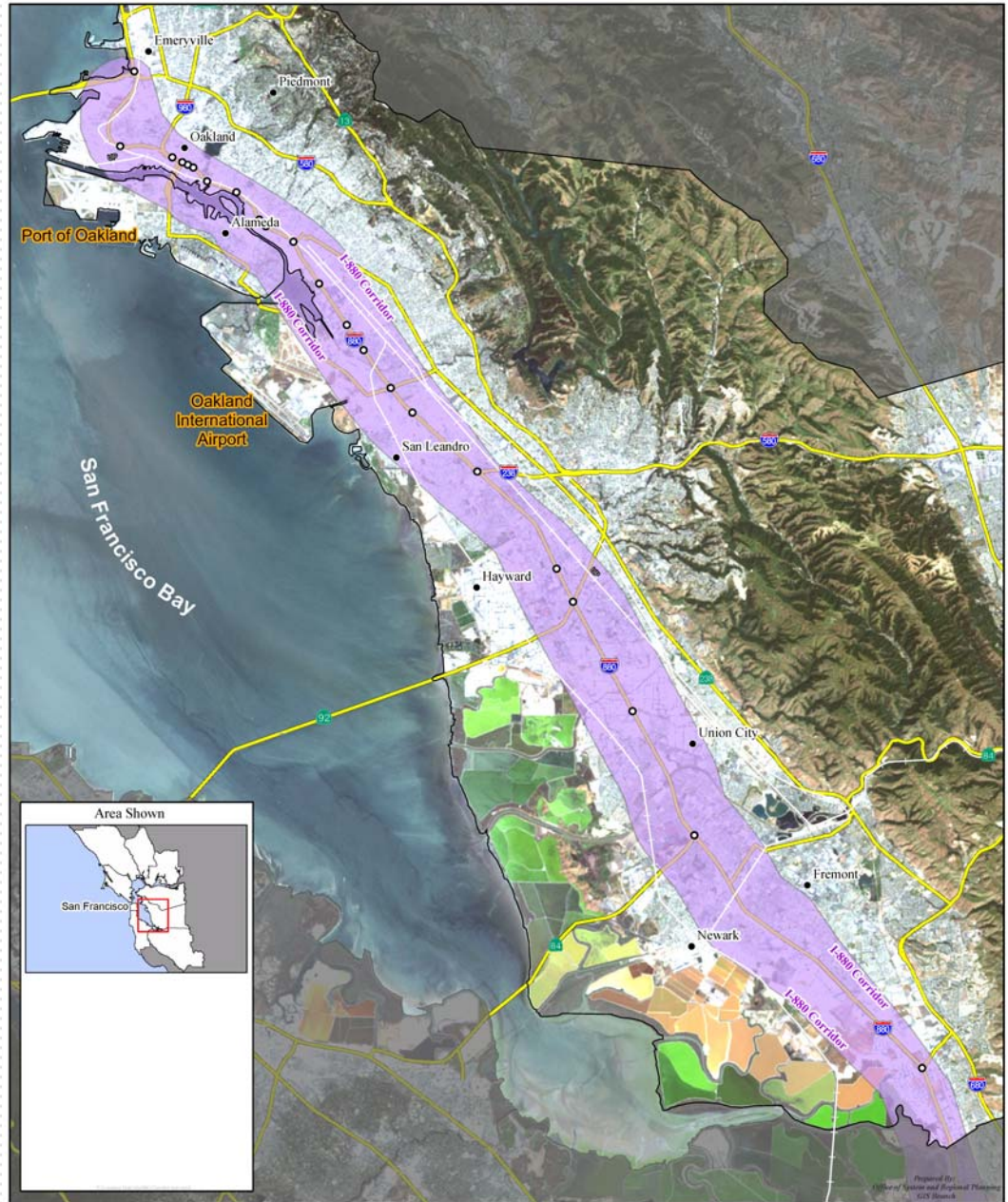
California Department of
Transportation

District 4





Interstate 880 Corridor

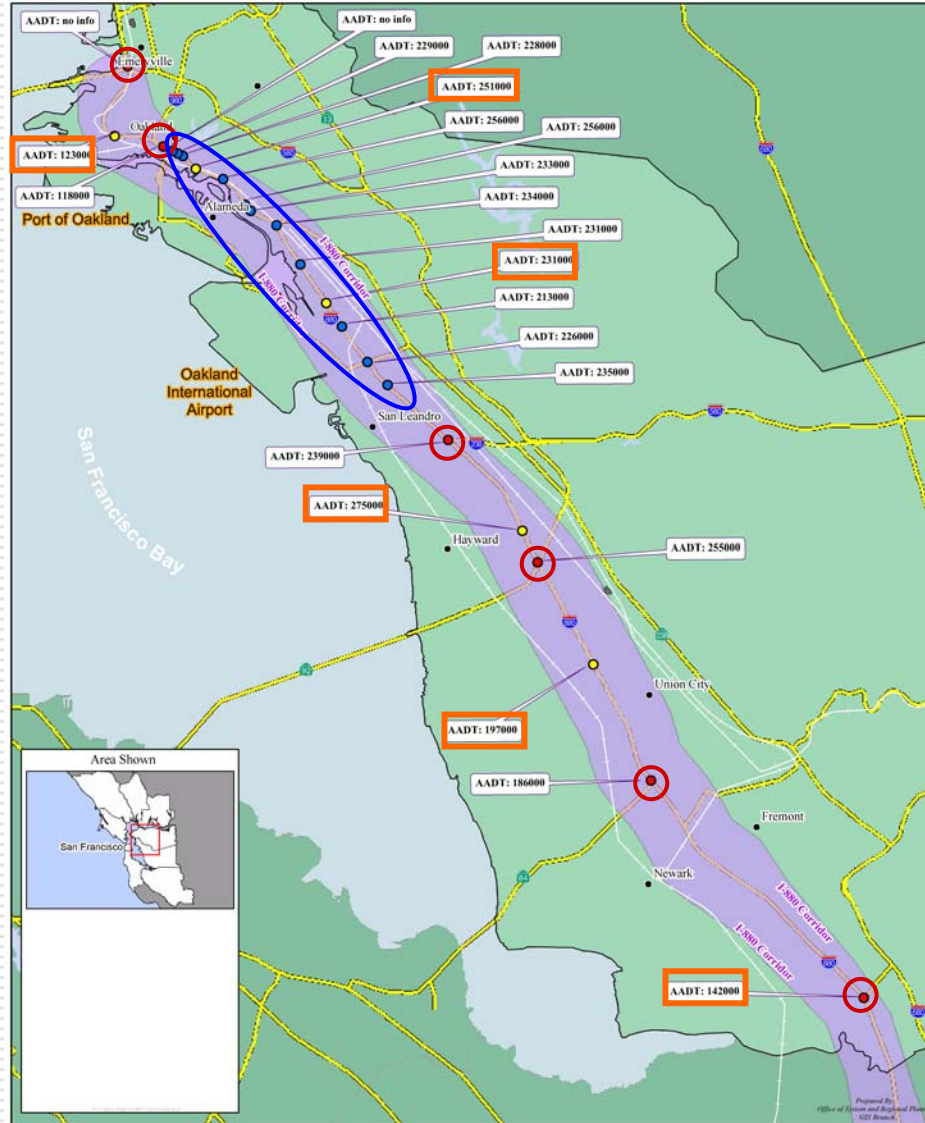




Interstate 880 Corridor

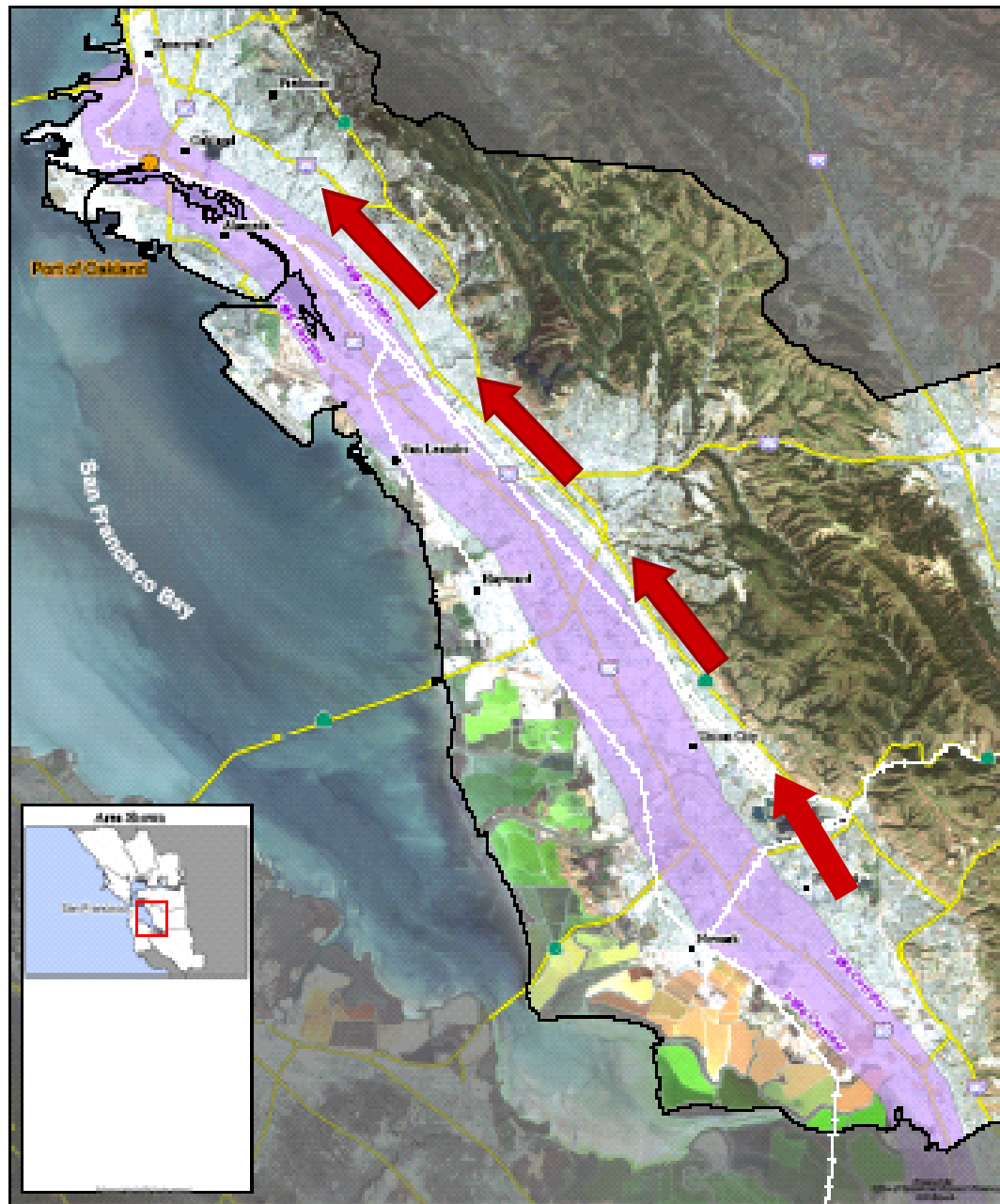
Dec 2004

I-880
Annual
Average
Daily
Traffic

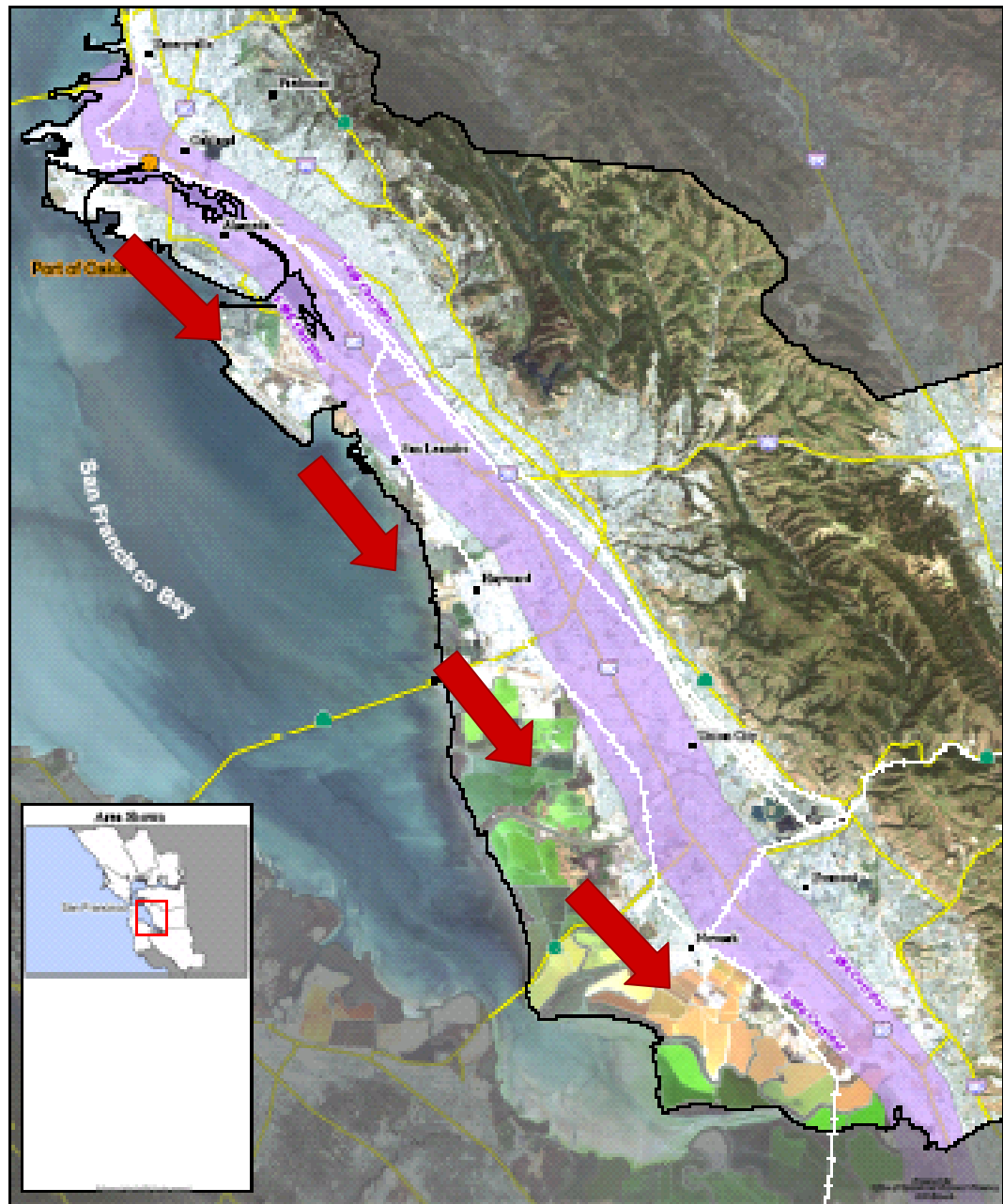


Prepared By:
Office of Urban and Regional Planning
City of Alameda

I-880
AM Peak
Period Flow



I-880
PM Peak
Period Flow



Challenges

Facility

- Urban Conditions
- Aging Facility
- Frequent Access
- Major Route Connections

Challenges

Travel conditions

- Heavy Overall Traffic Volumes
- High Truck Volumes (#1 Corridor in Bay Area)
- Extended Peak Hours
- Bottleneck Locations
- Accidents (non-recurring congestion)

Improvement Objectives

- Enhance Corridor Efficiency
- Improve Reliability/Predictability
- Address Bottleneck Locations
- Improve with Freight Movement in Mind

Improvement Objectives

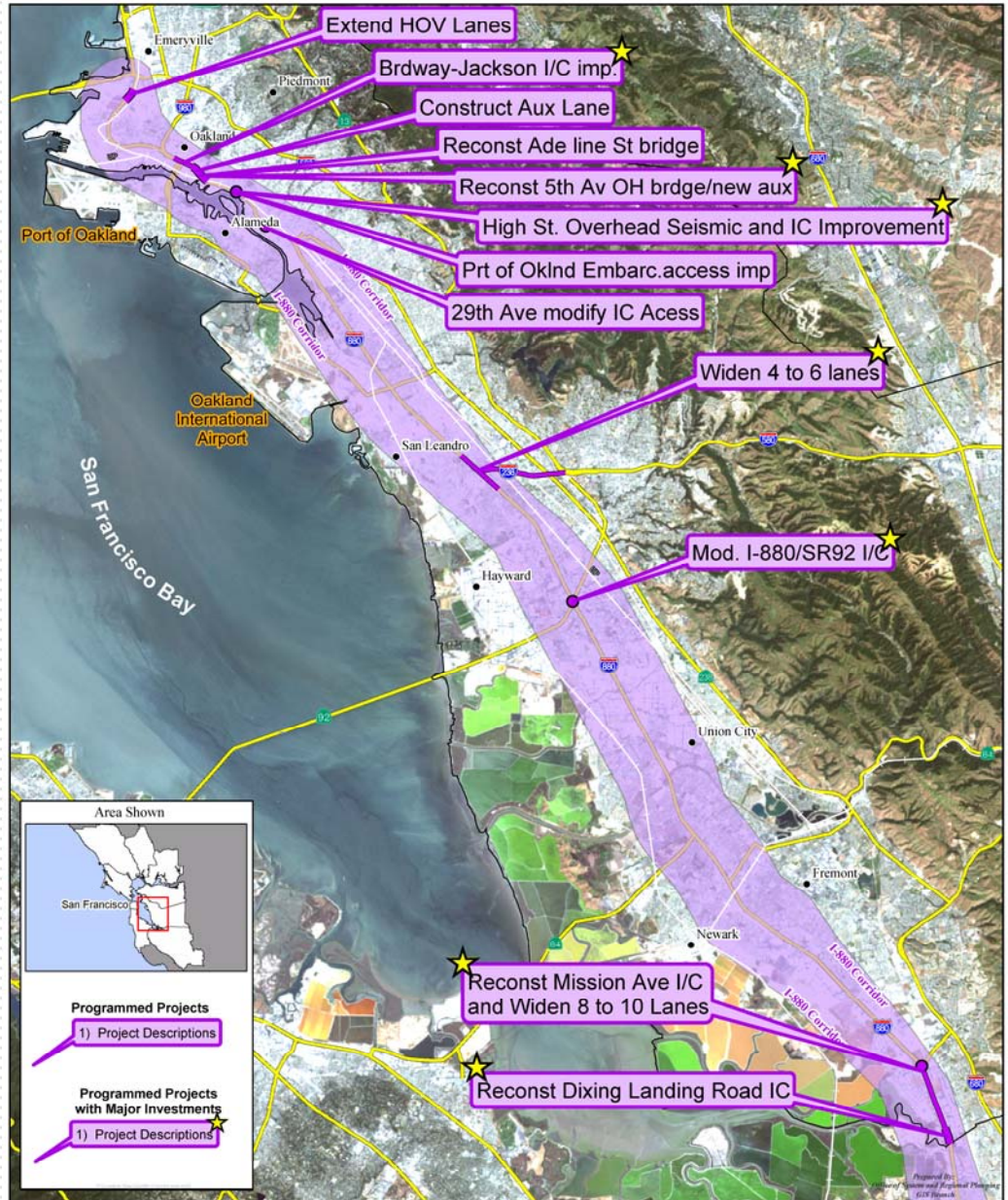
- Minimize Disruption to Traffic and Community Impacts
- Air Quality Benefit

How Do We Get There?

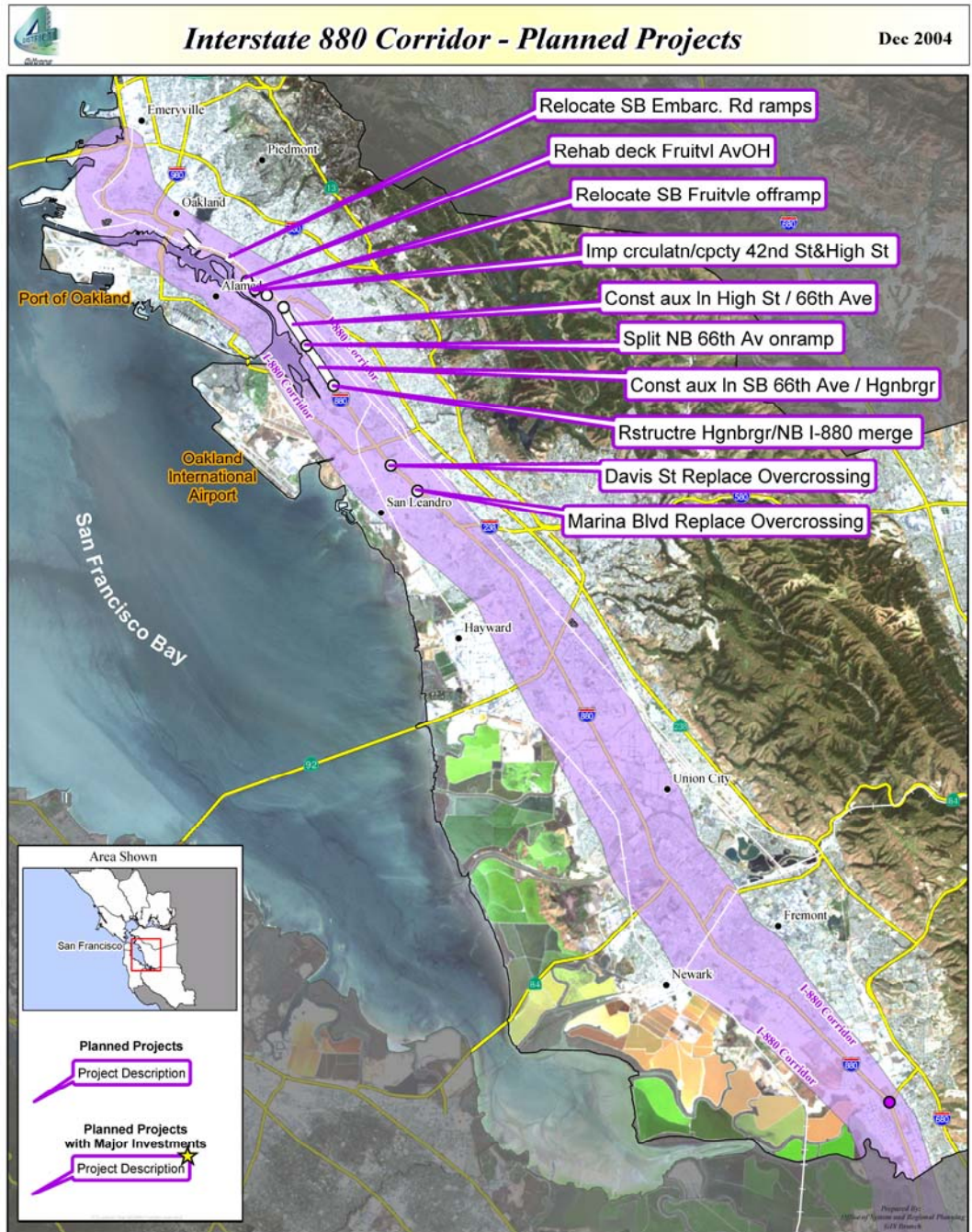
- Strategic Capital Investments
 - Operational Improvements
 - Technology
 - Enhanced Incident Management
-
- Collaboration and Partnership



I-880 Programmed Projects



I-880 Planned Projects



I-880 Improvements

- Pavement Rehabilitation
- Interchange Modifications
- Operational Improvements
- Intelligent Transportation System Strategies
 - Improved Traffic Monitoring and Incident Detection
 - Advance Traveler Information and Communication
 - Continued Implementation of Ramp Metering
 - SR-238/I-880 Connector
 - Truck “Weigh-In-Motion” System

I-880 Improvements

- Implementation of Bay Area Incident Response System (BAIRS)
 - Reduce the time to clear incidents
- Enhanced Freeway Service Patrol
- Congestion Management Agency SMART Corridor

Special Focus on I-880

- Center for Commercialization of ITS Technologies
- Performance Measures



I-580/238/205 Programmed Projects

